



Protecting life through  
instant response technology



DETECT GUNSHOTS

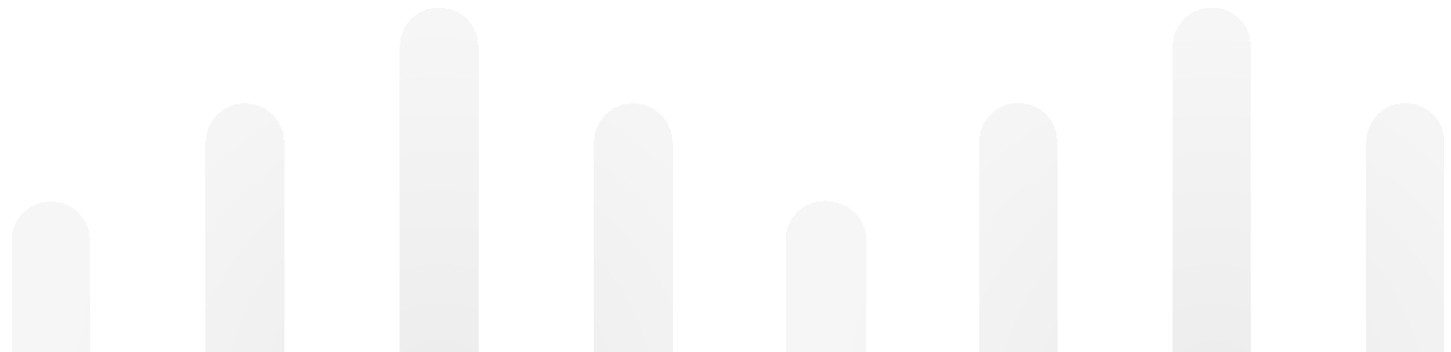
INFORM LAW ENFORCEMENT

AUTOMATE THE RESPONSE

# INDOOR GUNSHOT DETECTION

---

When precious minutes can make a significant difference to attack severity, **AmberBox Gunshot Detection** enables first responders to arrive on scene faster, equipped with the vital information needed to contain threats and mitigate casualties.



**#1 MARKET LEADER IN INDOOR GUNSHOT DETECTION TECHNOLOGY**



# A GROWING PROBLEM

Gun violence is not only becoming more frequent, but deadlier.

Preparation and training are crucial, but in an active shooter situation, the most important factor is a quick and accurate response.

**Every second counts.**

## What assumptions are you making?



Can you **guarantee** that people are able to accurately identify the sound and location of a gunshot?



Can you **guarantee** that people will immediately call the police or notify security personnel and communicate precise incident information?



Can you **guarantee** that people in other areas of your site will be made aware of the situation in time to respond?

# A KEY SECURITY THREAT

<b>Rank</b>	<b>Top Security Threats</b>
1	<i>Cyber/Communications Security: Internet/Intranet Security</i>
<b>2</b>	<b><i>Workplace Violence Prevention/Response</i></b>
<b>3</b>	<b><i>Active Shooter Threats</i></b>
4	<i>Business Continuity Planning/Organizational Resilience</i>
5	<i>Cyber/Communications Security: Mobile Technology</i>

“Top Security Threats and Management Issues Facing Corporate America: Survey of Fortune 1000 Companies”

**12.5 minutes** is the average length of an active shooter incident.

**5 minutes** is the average time taken to call the police following a gunshot.

**Can you rely on people to make the call?**

---

**AMBERBOX RESPONDS WITHIN 3.6 SECONDS,  
POLICE ARRIVE ON SCENE FASTER**



With AmberBox - 3 minute typical police response



Without AmberBox - 8 minute typical police response



# THE AMBERBOX SOLUTION

AmberBox addresses the three critical elements in an active shooter event:



## Response time

Automate the emergency process, remove human error and deliver immediate and precise detection and notification in 3.6 seconds, whilst automating the 911 call.



## Operational intelligence

Automatically link all key security personnel into a conference call with police. View real-time operational intelligence through the response platform and situation notifications.



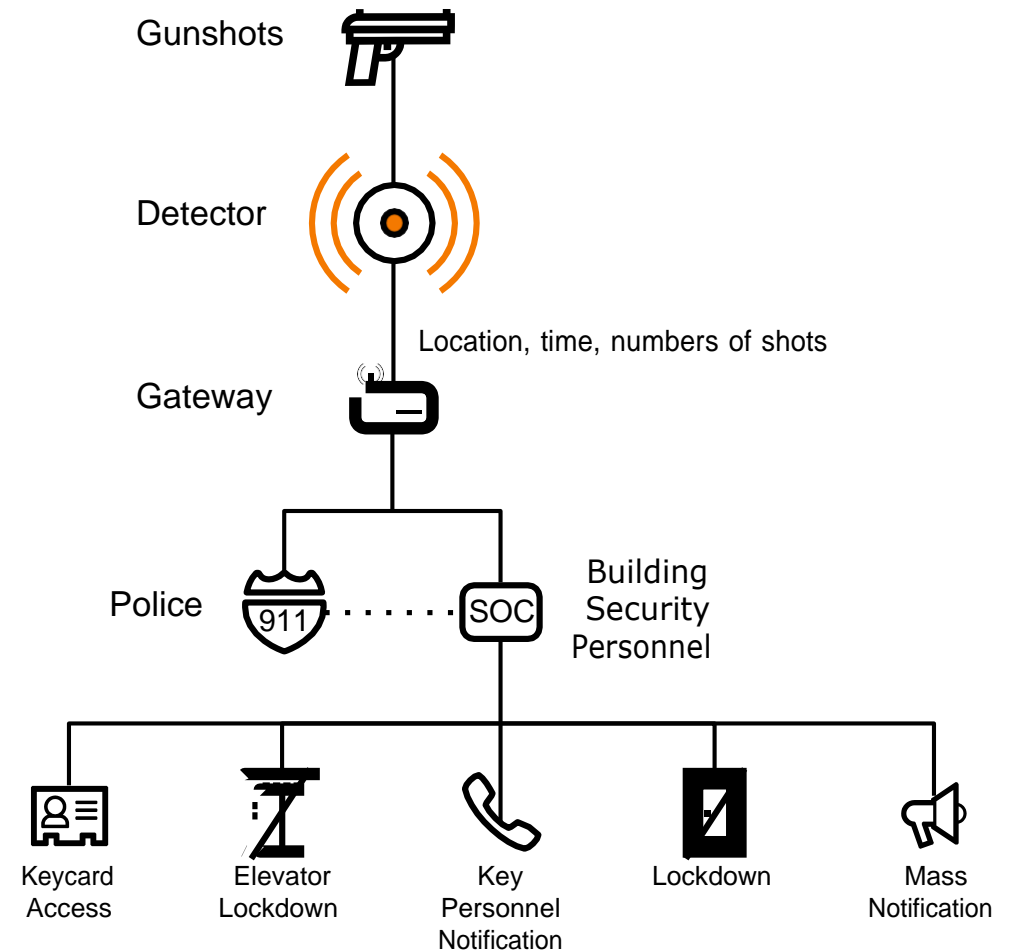
## Automating the response

Integrate with any security system vendor (access control, VMS, mass notification etc.); facilitate an immediate response with pre-programmed security features anytime, anywhere.



# HOW AMBERBOX WORKS

- 1 AmberBox uses acoustic and infrared data to respond immediately following a firearm discharge.
- 2 The gunshot is verified utilizing our unique machine learning algorithm, instantly determining the firearm audio signature.
- 3 Detectors communicate an alert signal through a wireless MESH network to the building gateway.
- 4 Automatic gunshot alerts are sent to law enforcement via our E911 certified platform, with simultaneous notifications to building security. A conference call line is created to share information and coordinate efficiently.
- 5 AmberBox can immediately activate building security systems, such as access control, while alerting personnel with SMS, email and call notification. Real-time shooter location tracking can be viewed through the web or mobile response platform.





# THE SCIENCE

AmberBox uses cutting edge tri-factor authentication to quickly detect and respond to gunshots.



**Percussion** - Detects the two distinct percussive signatures produced by a gunshot: the muzzle blast and bullet shockwave. AmberBox listens for these signatures at a frequency well above the range of human hearing, to determine if a gunshot has occurred.

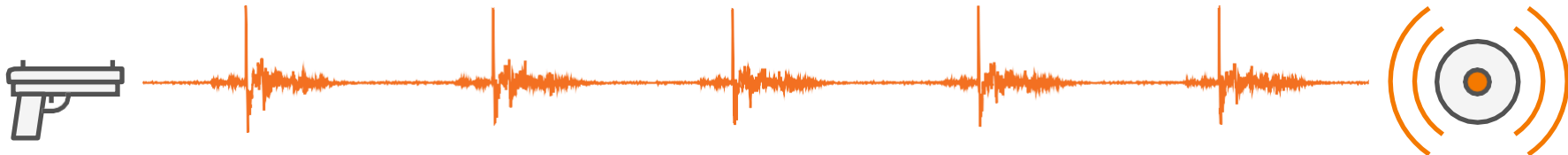


**Infrared** - Senses the muzzle flash of a gunshot caused by the combustion of gunpowder mixing with the ambient air.



**Machine Learning Analysis** - Utilizes patented machine learning analysis to compare sounds detected against a database of thousands of gunshot samples, stored on every detector.

Crucially, AmberBox detectors use a combination of these factors, and as a result, do not require line of sight to trigger and have a near-zero false alarm rate.

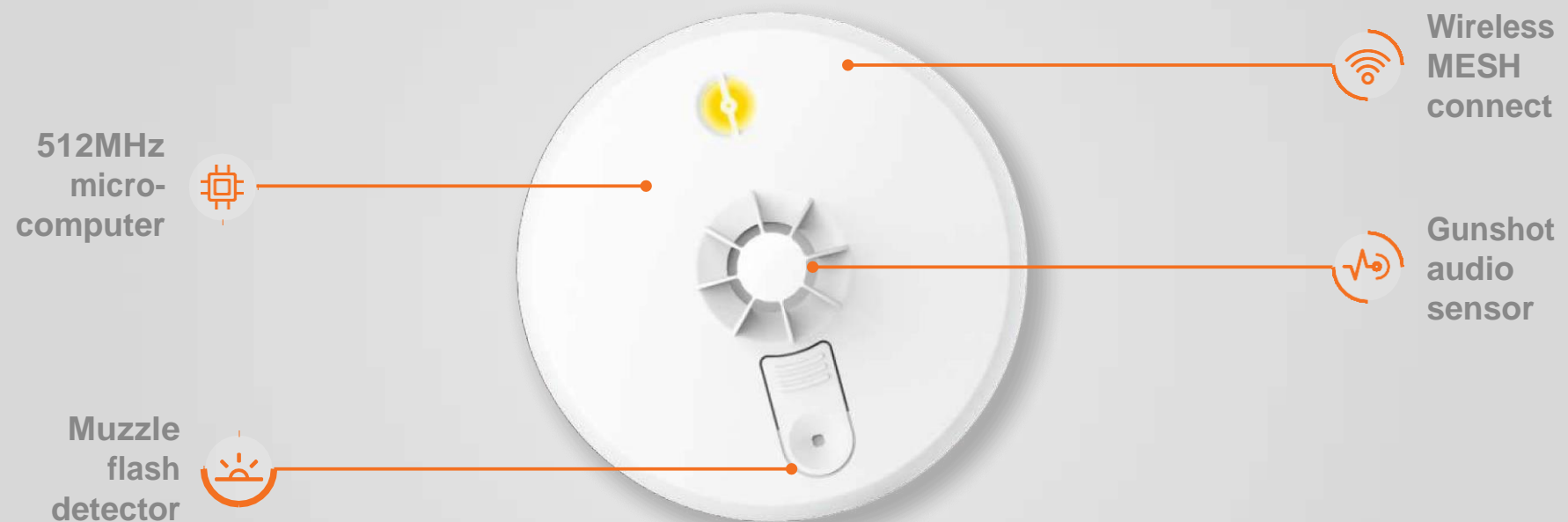


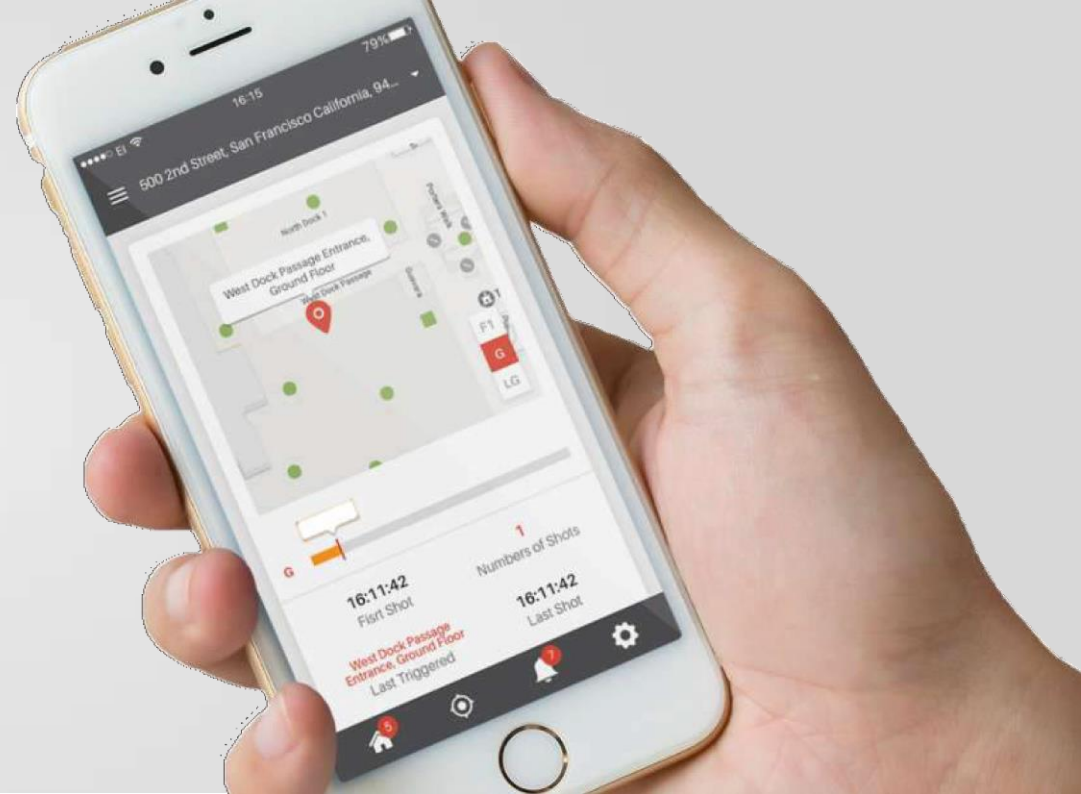
# THE DETECTOR

AmberBox detectors communicate utilizing a proprietary wireless MESH network, where data is hopped between devices to a base gateway. As such, they do not require a wired data connection, only a power supply, and can automatically “plug and play” configure to the site. AmberBox detectors do not need to connect to, or interfere with, existing corporate internet networks.

Each device covers a range of 60-90 feet and is able to sense through walls. Detectors are easy to install, can be fitted by any qualified electrician and are available in high and low voltage power supply variants.

All analysis is conducted at the detector, with no real-time audio transmitted, guaranteeing your privacy.

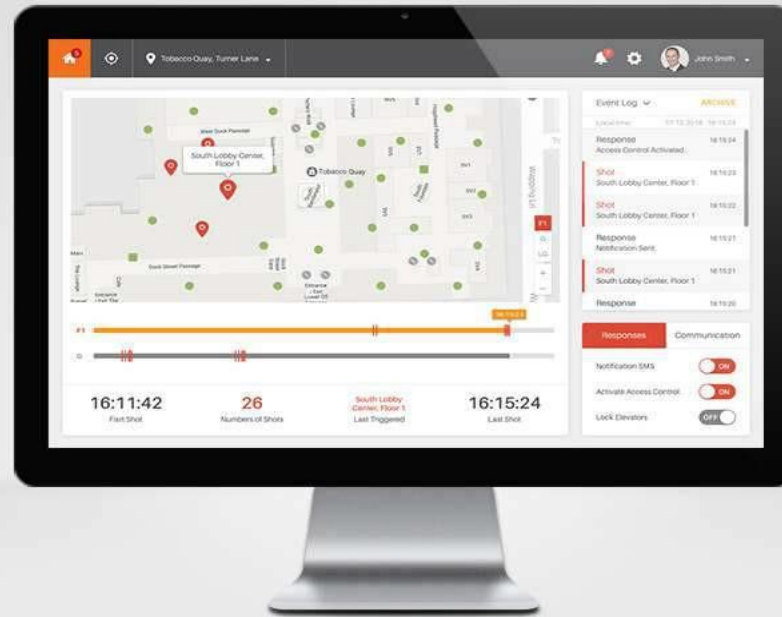




# EVENT NOTIFICATION

Upon activation, threat alerts are issued by call, SMS and push messaging. An automatic 911 call is made via our E911 certified telecommunications platform. An open conference call line is simultaneously created between the police and building security representatives to share information and coordinate efficiently.

Instant response technology removes human error and the bystander effect, allowing authorities to respond to threats faster, with increased accuracy. Automatically protects your organization—no user intervention required.



# THE AMBERBOX RESPONSE PLATFORM

The AmberBox Response Platform provides the ultimate tool to remain constantly informed and respond quickly to a gunshot incident. This cloud-based platform can be accessed via desktop and mobile devices, allowing data to be viewed in real-time on rapidly evolving active shooter incidents, anywhere, anytime. The response platform instantly presents vital intelligence, including:

- Precise gunshot locations and timing
- Movement of shooter
- Event type classification

# THE RESULT



## Patented Gunshot Detection

Immediate and precise gunshot detection



## Reduce Response Time

Automatic notification to 911 and building security



## AmberBox Response Platform

Track incident locations and data in real-time anywhere



## Easy Installation

No wired data connection, only a high / low voltage power supply



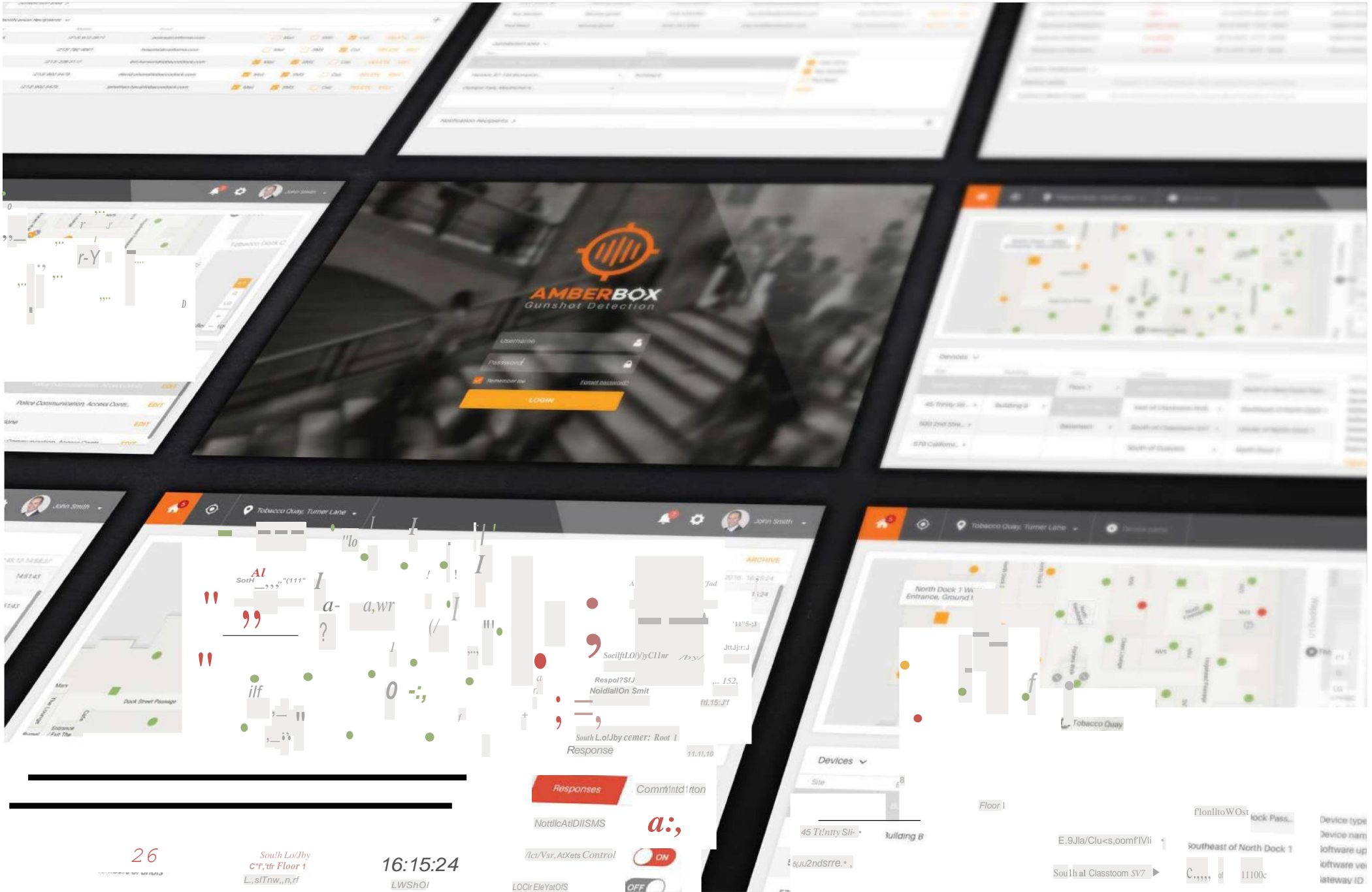
## Seamless Integration

Universal integration with building security systems



## Privacy and Data Security

No real-time audio transmitted, guaranteeing privacy



26

South Lo/By  
C'r, tr Floor 1  
L, sITrw, n, ff

16:15:24

LWShOI

LOCirEleYatOIS

Device type  
Device nam  
software up  
software ver  
gateway ID





## Contact Us

[Info@VoDaViTech.com](mailto:Info@VoDaViTech.com)

866.896.1777

[www.VoDaViTech.com](http://www.VoDaViTech.com)

